

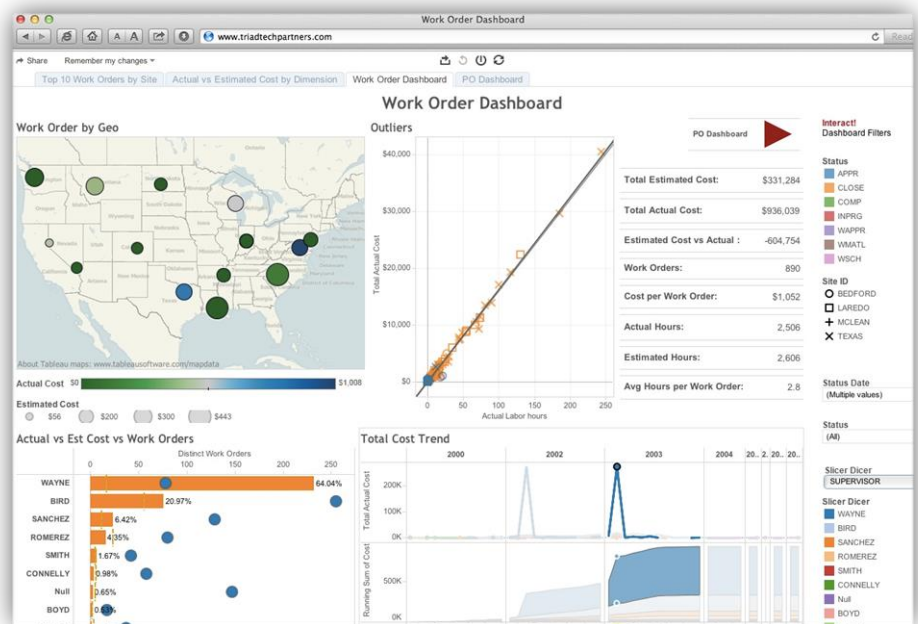
Tableau Dashboard for Maximo

View – Assess – Respond

The Tableau Dashboard for Maximo leverages Tableau’s easy to use data analysis software together with the industry-leading Enterprise Asset Management capabilities of Maximo. Visualize all of your mission critical data and work management activities in a format that enables rapid identification of issues and awareness of coverage gaps, allowing you to assess priorities and shift resources as needed to address issues.

Benefits to Maximo Customers:

- Prioritize work orders based on visual cues
- Publish interactive charts graphs and reports to the web for distribution to large groups
- Data can be shared in a format that is easy to interpret for executive management
- Dashboard format allows for rapid deployment
- Eliminates need for expensive Maximo Spatial or a GIS Database



Dashboard Templates Provided for:

- Meantime to Failures
- % of Emergency Work Orders vs PM's
- Assets by Geography
- % of PM Inspections Overdue
- Top 5 Component Failures on Equipment
- Overall Equipment Effectiveness (OEE)
- Meantime to Repair (MTTR)
- Meantime between Work Orders (MTBWO)
- % of Overtime Hours
- Recovery Time/Point Objective (RTO/RPO)

Get Started Today for One Fixed Price:

1. Tableau Software for 1 Developer and 10 Web Interactors
2. Maximo Integrations (Basic)
3. Dashboard templates
4. Software Setup and implementation
5. Tutorial and remote assistance for 90 days

For More Information Please Contact:

Katie Young
 Account Executive
 Sales Representative
 Triad Technology Partners
 804-814-0384
Katie@triadtechpartners.com